



INSTALLATION GUIDE

TANK057

TO SUIT HOLDEN COLORADO / ISUZU D-MAX 2012+
Dual Cab Diesel



- Ironman 4x4 Long Range Fuel Tank to suit:
Holden Colorado 2.8L Duramax Turbo Diesel Engine
Isuzu D-Max 4JJ1 3.0L Turbo Diesel Engine
- It will take about 3 hours to install

DATE OF ISSUE: 080719

IMPORTANT: Please note that it is the installer's responsibility to ensure that the inside of the fuel tank is completely clean and free from foreign matter prior to installation.

Fuel filter should be replaced after 1,000km

IMPORTANT: Fuel Tank installations should only be done by a qualified person and it's the responsibility of this person to ensure correct fitment and to ensure the tank is free from fuel leaks.

BEFORE COMMENCING INSTALLATION, PLEASE ENSURE YOU HAVE ALL PARTS REQUIRED

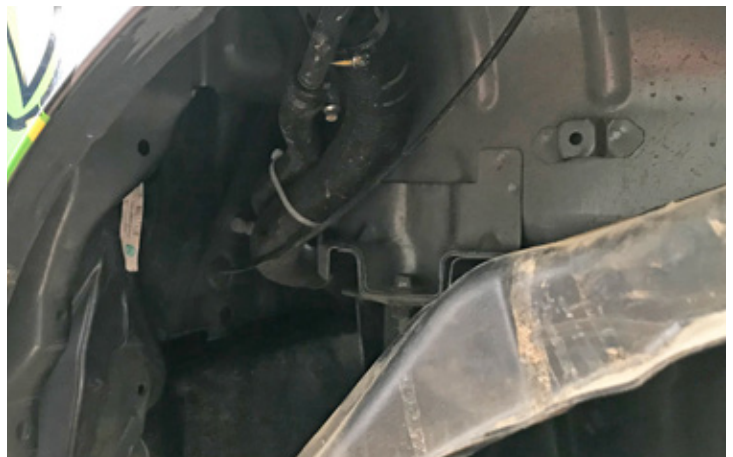
1 x Fuel Tank	1 x 16 O/D Crush Tube	3 x M10 Spring Washers
1 x Sender Clamp Ring	1 x 14 O/D Crush Tube	1 x M12 Spring Washer
1 x Roll Over Valve	1 x Magnet	1 x M10 Nut
1 x 12.5 I/D Fuel Hose (240mm)	2 x M10 Bolts (45mm)	6 x M5 Cap Screws (8mm)
1 x 12.5 I/D Fuel Hose (400mm)	1 x M10 Bolt (90mm)	4 x M5 Cap Screws (10mm)
1 x 8 I/D Fuel Hose (600mm)	1 x M12 Bolt (100mm)	10 x M5 Flat Washers (10mm)
4 x Right Angle Barbs	2 x M10 Flat Washers (25mm)	1 x M12 Nut Plate
4 x Hose Clamps (12-22mm)	2 x M10 Flat Washers (48mm)	2 x Split Conduit
1 x Hose Clamp (8-16mm)	1 x M12 Flat Washer (37mm)	

1. Before installation check fuel tank application is compatible with your vehicle.

2. Once vehicle is raised, unbolt the rear section of the tailshaft and move to the side as shown.



3. Undo the fuel filler and breather hose from the filler neck by dropping the left rear inner guard liner as shown.



4. Support the existing tank and remove tank retaining straps and bolts.

5. Carefully lower the existing tank enough to gain access to the top of the tank.

Disconnect sender wire and fuel pick up and return lines from fuel sender assembly.

6. Remove tank from vehicle.

7. Remove fuel sender assembly, the fuel filler and breather hose from the fuel tank and place aside for re-use.

8. Remove replacement tank from packaging and inspect for any foreign matter. Clean as required.

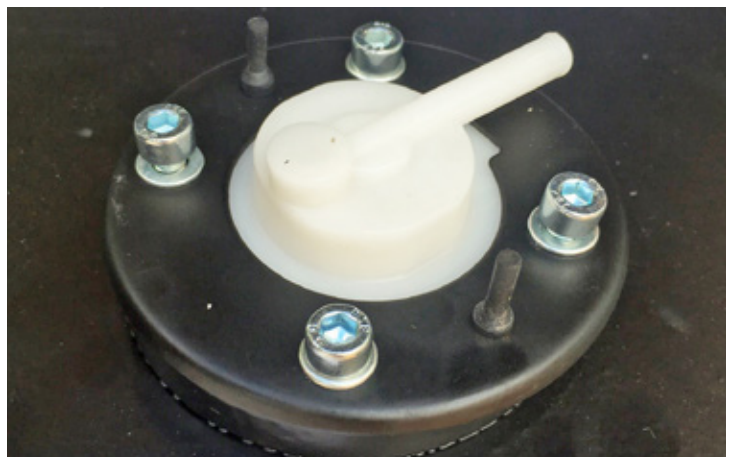
Insert magnet (supplied) into fuel tank.

Refit the fuel sender assembly to the new tank using 'O' ring. Ensure the fuel float clears any baffles inside the tank.

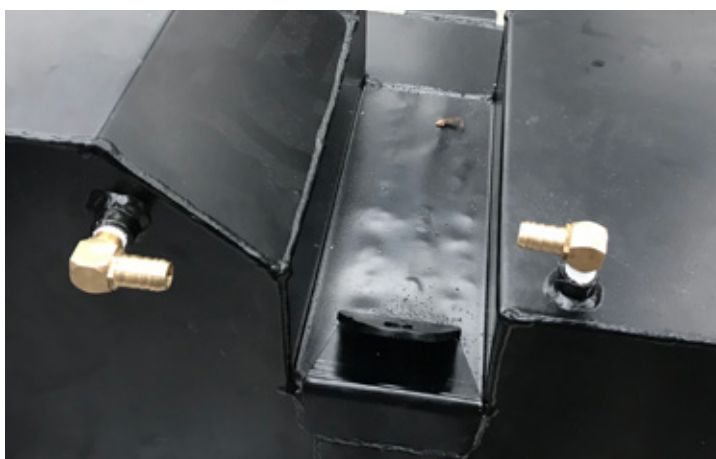
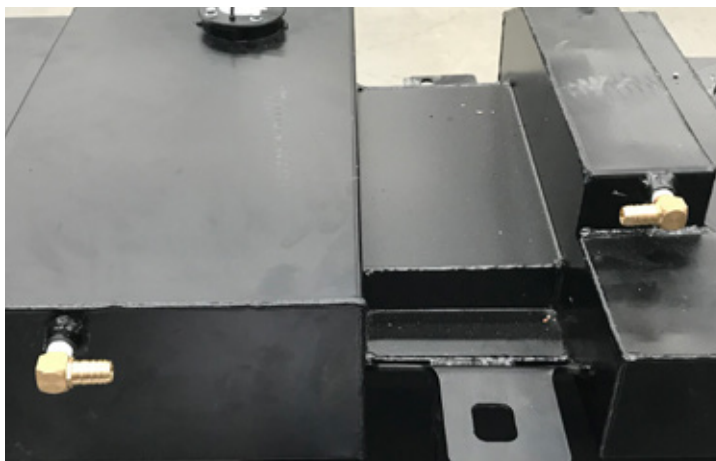


9. Secure fuel sender assembly to the fuel tank using sender clamp ring, 6 x 8mm M5 cap head screws and washers (supplied).

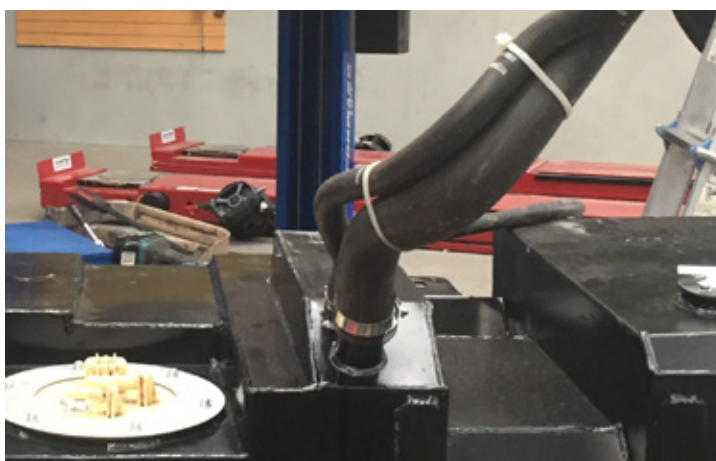
10. Fit the roll over valve to the tank using 4 x 10mm M5 cap head screws (supplied).



11. Fit 4 x right angle barb fittings to the tank as shown and use sealant to secure in place and prevent leaks.



12. Refit fuel filler and breather hoses to fuel tank and secure with factory hose clamps.



- 13.** Run split conduit (supplied) over fuel lines.



- 14.** Fit 600m fuel hose (supplied) to roll over valve using 8-16mm hose clamp (supplied).



- 15.** Raise fuel tank into vehicle far enough to enable reconnecting sender wire, fuel pick up and return lines to fuel sender assembly.

Ensure the fuel pick up and return lines go over the top of the crossmember.



- 16.** Finish raising fuel tank into final position, taking care not to crush wires, hoses etc.

Refit fuel filler and breather hose to filler neck.

Ensure tank is positioned to allow adequate clearance for the tailshaft.

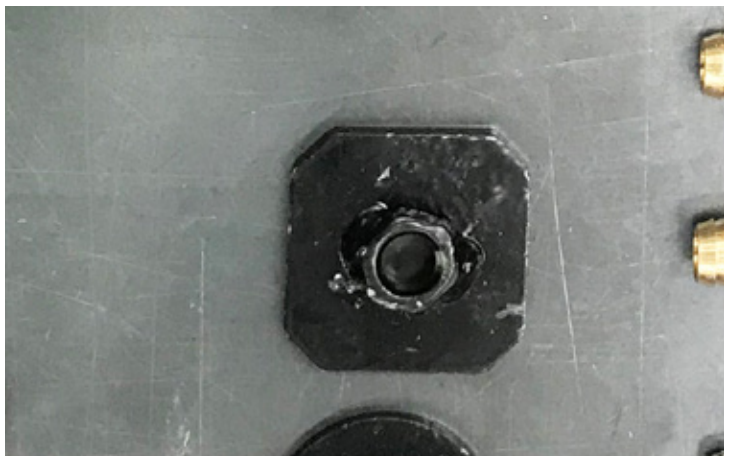
- 17.** Install the 2 x M10 bolts, washers and spring washers into the captive nuts on the chassis.



- 18.** Inspect crush tube (supplied) and remove any burred edges.

Insert crush tube into crossmember (a slight tap using a hammer may be required).

Insert M12 bolt with washers (supplied) into crush tube and secure into place with nut plate (also supplied) on top of crossmember.



- 19.** Using the M10 bolts, washers and crush tube, go through the front crossmember and use the large washer and nut to secure.



- 20.** Tighten all bolts.

- 21.** Fit 240mm fuel hose (supplied) to the front 2 barbs, then fit 400mm fuel hose to the rear 2 barbs ensuring both hoses are run over the crossmember. Secure all hose ends with hose clamps (supplied).

Reattach fuel filler and breather hoses, secure with factory hose clamps.



- 22.** Install brake line extension bracket. Please see following page (8) for fitting instructions.

Note:

This brake line extension may already be fitted if a suspension upgrade has previously been installed.

- 23.** Fill tank with fuel, check operation of fuel sender and check for leaks.

Start vehicle and recheck for fuel leaks.





BRAKE LINE RELOCATION KIT

Installation Instructions

Part No. 1152K

Isuzu D-Max 2012 + Holden RG Colorado 2012+

Kit Contains:

- 1 x brake line relocation bracket
- 2 x M8 bolts
- 2 x M8 nuts
- 2 x M8 spring washers



Tools & Equipment

- 2 x 13mm spanners
- 1 x 14mm spanner
- 1 x pair of pliers

1. Remove spring clip that retains brake line and existing bracket.
2. Gently pull brake line through bracket so that fitting is clear of hole.
3. Using hardware provided, secure new bracket as shown to existing bracket on chassis and tighten.
4. Position brake line in new bracket and reattach spring clip.
5. Secondary to kit installation, a relocation of this brake hose bracket on the LH chassis rail is necessary.
6. Using the 12mm spanner, remove both bolts, securing the bracket.
7. Reposition bracket so that top hole in bracket is aligned with bottom hole on chassis rail.
8. Refit one bolt to secure bracket to the rail in the position shown.



Warranty will be voided by damage or failure caused by incorrect procedure.

Before proceeding to install Crossmember Drop Brackets, please fully read instructions and ensure that necessary tools are on hand.

Always wear personal safety protection ie. Safety Glasses and Gloves to prevent injury.

