



# INSTALLATION GUIDE

## SS050 / SSR050

MITSUBISHI MQ TRITON 2015+



- Ironman 4x4 SS050 / SSR050 Side Steps and Rails to fit a Mitsubishi MQ Triton 2015+
- Side steps will take about 1 hour to install.
- Side steps and rails will take about 2 hours to install.

**NOTE:** This product has been tested for air bag compatibility and therefore the mounting system **MUST NOT** be modified

**IMPORTANT:** Installations should only be done by a qualified person and it is the responsibility of this person to ensure correct fitment.

1. Before installation check side step/rail application is compatible with your vehicle.

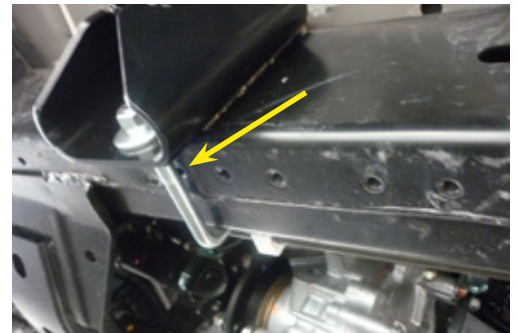
2. Remove factory side steps.

3. Locate U-Bolts in fitting kit and place over chassis from inside out.

NOTE: Brake lines and fuel lines might need to be levered slightly away from chassis to allow clearance for U-Bolts as shown.



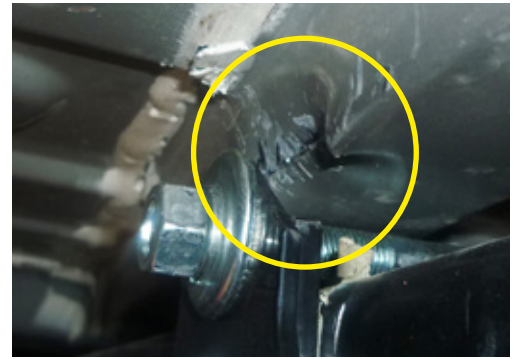
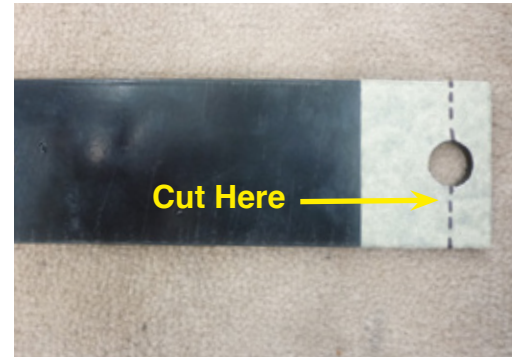
4. Position front U-Bolt over front captive nut as shown in pic



5. Place spacers supplied over front and rear U-Bolts.



6. On some models you may need to check for clearance between spacer plate and the support rib on floor. If clearance is less than 10mm, spacer plate will need to be modified and the support rib in floor may need to be manipulated for clearance as shown.



7. Using an assistant, lift side step into position over U-Bolts and attach nuts, flat and spring washers supplied.

NOTE: Recheck for 10mm clearance at support rib

8. If side rails are being installed, place them on side step in position and check length against bull bar and shorten if required.

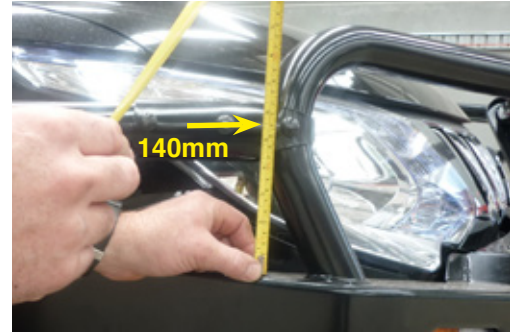
Rustproof any exposed metal as required.

9. Position side rail against bull bar and adjust rail so that it is parallel with the front mudguard and clamp in position to the side step with M6 hardware provided as shown.



10. Use side rail clamp to mark holes to be drilled using 8.5mm drill bit

NOTE: Bull bar hole will be 140mm above bull bar pan



11. Secure side rails to bull bar using coach bolts, flat washers and nuts supplied.



12. Ensure all mounting hardware for checkerplate is tight.