



INSTALLATION GUIDE

BBT048/ BBC048/ BBCD048 BBA048/ BBT048-NL

NISSAN NAVARA NP300 2WD & 4WD Models



- Ironman 4x4 BBT/ BBC/ BBCD/ BBA/ BBT048-NL Bull Bars fit to a Nissan Navara NP300.
- It will take about 3 hours to install.

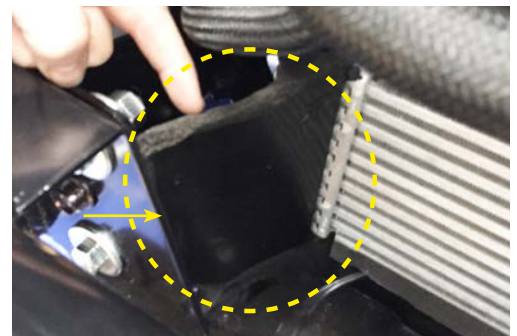
NOTE: This product has been tested for air bag compatibility and therefore the mounting system **MUST NOT** be modified

IMPORTANT: Bull Bar installations should only be done by a qualified person and it is the responsibility of this person to ensure correct fitment.

1. Before installation check bull bar application is compatible with your vehicle.

2. Remove bumper bar, plastic bumper mounts, grill, bumper reinforcements, all plastic air ducts except for the side intercooler ducts as shown below. Also remove front section of factory bash plate.

Note: Hidden/obscured bolt in top corner of bumper bar, between guard and plastic



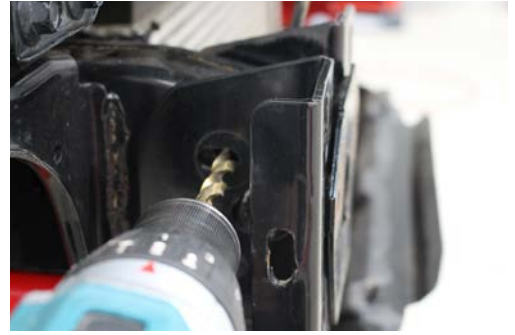
3. If fitting Ironman 4x4 recovery points, do this now.

4. Fit chassis support brackets to inside and outside of chassis as shown and secure using bolts, nuts and washers supplied.

Note: Return on outside brackets.



5. Using the two remaining holes in the support brackets as templates, drill 10mm holes through chassis



6. Secure with bolts, flat washers, spring washers and nuts provided.



7. Fit winch cradle to front of vehicle. Do not tighten the bolts at this stage as adjustment will be required once bar is installed.



8. If winch is being installed, refer to winch installation instructions on page 7.

9. Unwrap bullbar. Check over riders and light assemblies are tight in bull bar before installation.

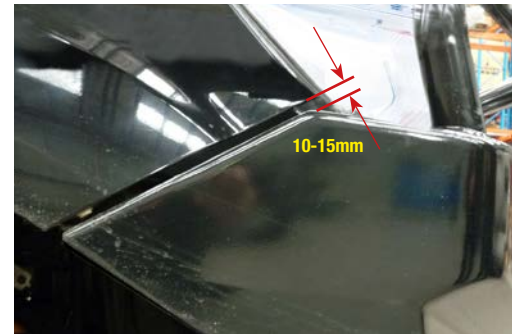
10. Fit bull bar to brackets using M12 hardware supplied. Do not tighten.



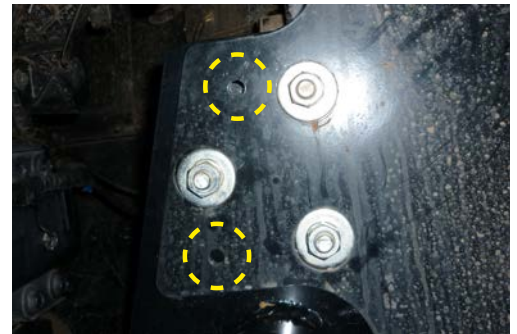
11. Centralise bull bar to vehicle bodywork and tighten the bolts holding the chassis bracket to the chassis.



12. Align bull bar with vehicle ensuring there is a 10mm to 15mm gap between wing of bull bar and mudguard. Tighten all bolts.



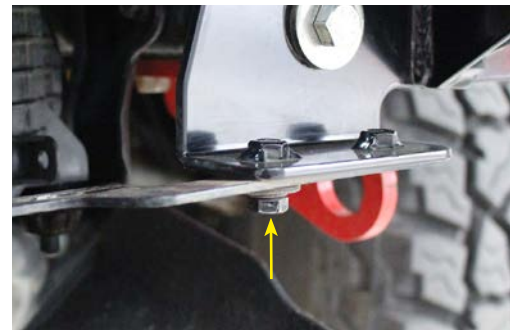
13. Drill and pin bar into position using M10 bolts, washers and nuts supplied.



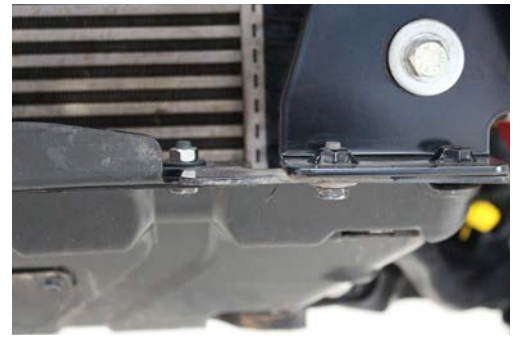
14. Connect parkers, indicators and fog lights (if applicable) as shown in diagrams on page 9

15. Fit protection plate brackets to bull bar cradle using the inner bolts as shown.

Note: Only use inner bolts at this stage as shown



16. Secure factory bash plate to bracket as shown.



17. Fit protection plates using M8 bolts and hardware provided.



18. Fit grill support bracket as shown.



For models equipped with water pumps, hose clip will need to be removed from one of the grill support mounting holes. Once this is done, secure hoses away from any sharp edges using cable ties.



19. Re-fit grill.

20. Trim guardliners, drill 2 holes as shown and secure in place behind wing protection plates with cable ties (not supplied).



Winch Installation

1. Bolt winch to cradle with gearbox to the left hand side of vehicle and cable spooling from bottom of the cable drum using bolts and washers provided.



2. Bolt fairlead to recess in front of bull bar using bolts, washers and nuts provided.



3. Fit bull bar to vehicle referring to steps of bull bar fitting instructions.

4. Mount control box in desired location.



5. Connect three colour coded cables to the corresponding poles on winch motor.



6. Connect the thin black earth wire and negative battery cable to the earth connection on the opposite side of winch motor.



7. Run the positive and negative battery cables into the engine bay taking care to secure cables away from any sharp or moving objects.

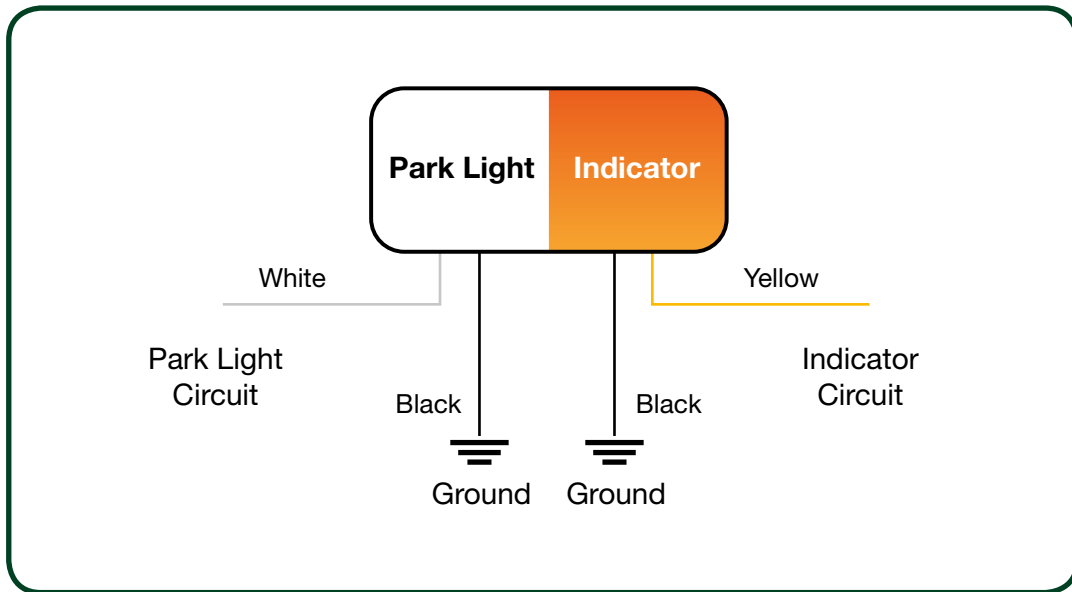
8. Connect positive and negative battery cables main battery of vehicle (Not Auxilliary Battery).

9. Attach breather hose to barb fitting on winch motor. Run hose to the highest available point in engine bay and cable tie in position. Cable tie hose away from any sharp, hot or moving objects.



Wiring Diagrams

PARK LIGHT & INDICATOR



FOG LIGHTS

