



INSTALLATION GUIDE

BBT014/ BBC014/ BBCD014

PJ & PK FORD RANGER 2007+
2WD & 4WD Models



- Ironman 4x4 BBT/ BBC/ BBCD014 Bull Bars fit to a Ford Ranger.
- It will take about 3 hours to install.

NOTE: This product has been tested for air bag compatibility and therefore the mounting system **MUST NOT** be modified

IMPORTANT: Bull Bar installations should only be done by a qualified person and it is the responsibility of this person to ensure correct fitment.

1. Before installation check bull bar application is compatible with your vehicle.

2. Remove grill, front bumper, bumper reinforcement and hooks from under chassis.



3. Remove flares from bumper.

PJ Ranger

4. Unbolt lower section of bumper.



- 4b. Mark and remove sections as shown.



PK Ranger

4. Mask a cut line across bumper from lower edge of number plate mounting holes through flare mounting hole at end of bumper as shown.



- 4b. Using an air hack saw or similar, remove lower section of bumper.



All Models

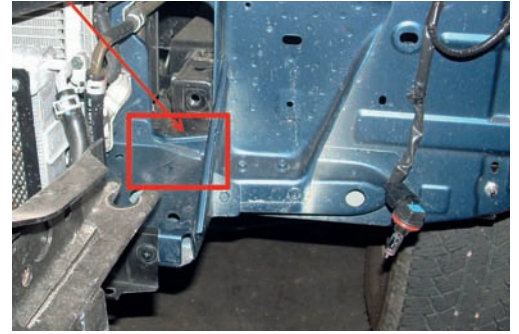
5. Refit top section of bumper to vehicle.



6. Place chassis bracket in position on chassis, making sure that bracket does not touch the vehicle body.



You may need to make clearance by bending or grinding a small part of this body away as shown.



7. Secure chassis bracket to chassis using original bolts with heavy duty flat washers supplied to four upper mounting points and M12 x 1.5 x 40 flat washers and spring washers supplied into four mounting holes under chassis.



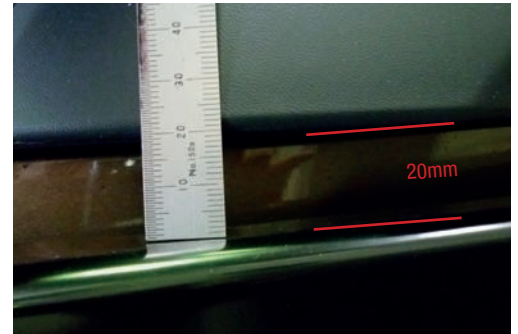
8. If winch is being installed, refer to winch installation instructions Pages 6 - 10.

9. Unwrap bull bar. Check over riders and light assemblies are tight in bull bar before installation.

10. Fit bull bar to chassis brackets using M12 bolts, flat washers, spring washers and nuts provided.



11. Align bull bar with vehicle and tighten all bolts. Allow approx. 20mm gap between bull bar wing and flare.



12. Once bar is aligned with vehicle and tightened, drill through pinning holes between bull bar and chassis bracket and secure with bolts, washers and nuts provided.



13. Connect park lights, indicators and fog lights as per wiring diagrams on page 10 of Instruction Guide.

14. Fit protection plate underneath the bull bar using M8 bolts, spring washers and flat washers provided and trim guards liners to suit.



Winch Installation

IMPORTANT: Before winch is installed to winch cradle, the clutch handle will need to be rotated to a more convenient position for access through bull bar.

1. Stand winch vertically on motor with gearbox facing upwards.



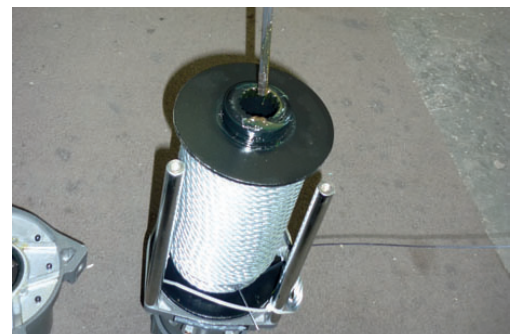
2. Undo and remove two chrome Allen head bolts which hold the gearbox to the tie rods.



3. Lift gearbox off winch.



NOTE: If shaft comes out of cable drum remove it from the gearbox and place it back into the drum making sure it engages with the brake.



NOTE: Also make sure that the drum support bush remains in the end of the drum support housing with the locating tang in the correct position.



4. Undo and remove 10 Allen head bolts that hold the gearbox housing to the drum support housing and rotate the drum support housing to the desired location.

For most Ironman 4X4 bull bars the gearbox will need to be rotated 2 holes in an anti clockwise direction. Make sure the gearbox gasket does not tear.



5. Re-install 10 bolts and tighten firmly.
NOTE: Take care not to over-tighten.



6. Refit gearbox to winch, refit and tighten Allen head bolts into tie rods.



PJ Ranger

7. Before winch can be bolted to cradle, a section of bumper bar will need to be removed.

To do this temporarily position winch on cradle and trace around winch onto front bumper and remove section.

All Models

8. Bolt winch to cradle with gearbox to the left hand side of vehicle and cable spooling from bottom of the cable drum using bolts and washers provided.



9. Bolt roller fairlead to recess in front of bull bar using bolts, washers and nuts provided.



10. Fit bull bar to vehicle referring to steps 10 - 14 of bull bar fitting instructions.

11. If winch control box is being fitted to top of bull bar remove control box bracket from control box.

12. Place control box on top of centre pan of bull bar with socket for hand controller facing outwards from vehicle. Mark position of the four mounting bolts.

Drill four holes to 6.5mm. Rust proof and de burr and attach control box to bar.



13. Connect three colour coded cables to the corresponding poles on winch motor.



14. Connect the thin black earth wire and negative battery cable to the earth connection on the opposite side of winch motor.



15. Run the positive and negative battery cables into the engine bay taking care to secure cables away from any sharp or moving objects. Connect negative battery cable to the main battery.

16. Find a convenient location close to main battery to mount battery isolation switch.

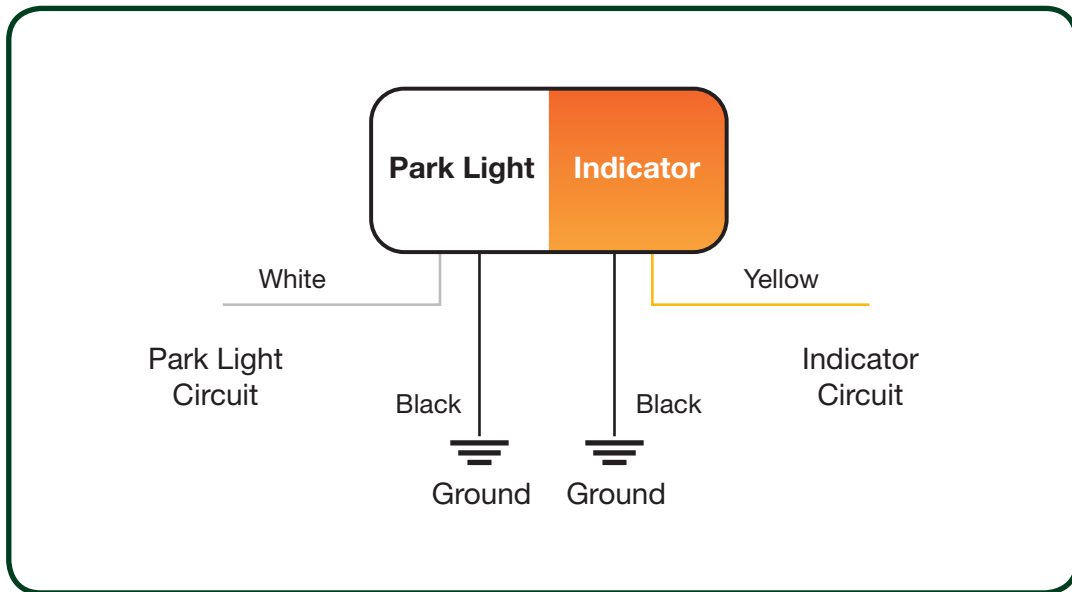
Connect positive battery cable to one side of isolation switch and connect other side to the positive battery terminal of main battery.



17. Once completed, refer back to step 9 of bull bar fitting instructions.

Wiring Diagrams

PARK LIGHT & INDICATOR



FOG LIGHTS

