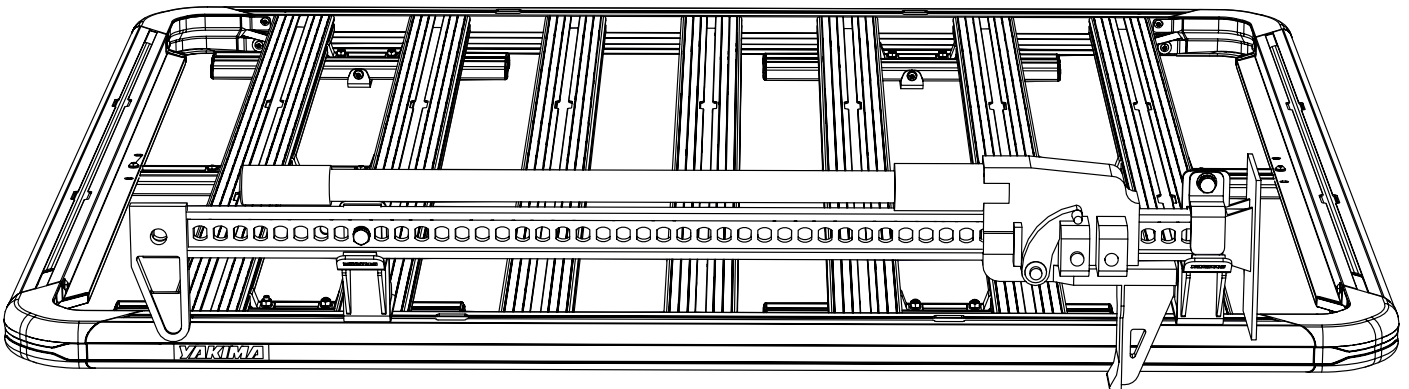


## FIRST TIME INSTALLATION

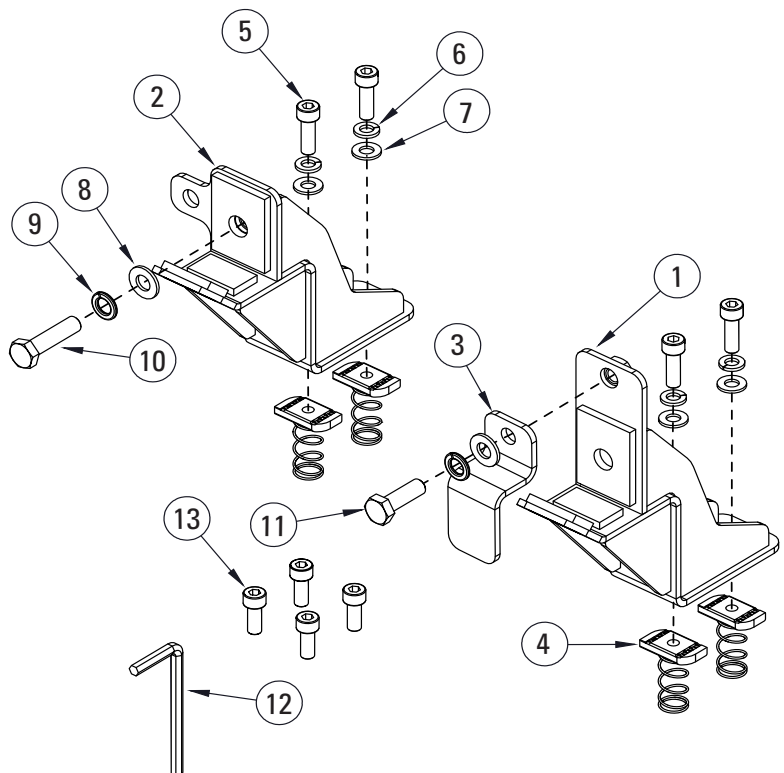
- Please read instructions carefully before installation.
- Check the contents of kit. Contact your YAKIMA dealer if any parts appear missing or damaged.
- Clean your Platform prior to fitting the YAKIMA High Lift Jack Holder.
- Place these instructions in the vehicle's glove box after installation is complete.



**Platform SOLD SEPARATELY**

## KIT CONTENTS

ITEM	COMPONENT	QTY
1.	High Lift Jack Holder Clamp Bracket	x1
2.	High Lift Jack Holder Padlock Bracket	x1
3.	Clamp	x2
4.	M8 Spring Nut	x4
5.	M8 Socket Head Capscrew 25mm	x4
6.	M8 Spring Washer	x4
7.	M8 Washer	x4
8.	M10 Washer	x2
9.	M10 Spring Washer	x2
10.	M10 x 40mm Hex Screw	x1
11.	M10 x 30mm Hex Screw	x1
12.	Allen Key 6mm	x1
13.	M8 Socket Head Capscrew 20mm (Crossbars only)	x4

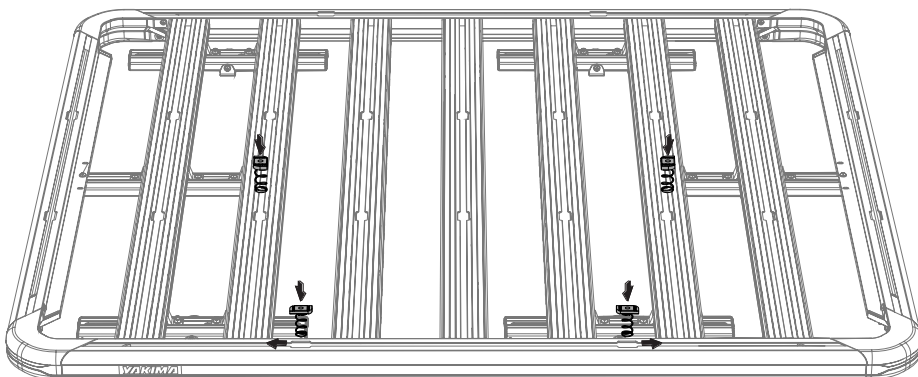


# INSTALLATION

**1**

## INSERT SPRING NUTS - PLATFORM

Insert 4x M8 Spring Nuts into Platform sides and slats via the cut outs as shown. Determine the best slat spacing for the High Lift Jack Brackets based on the length of Jack you will be carrying.

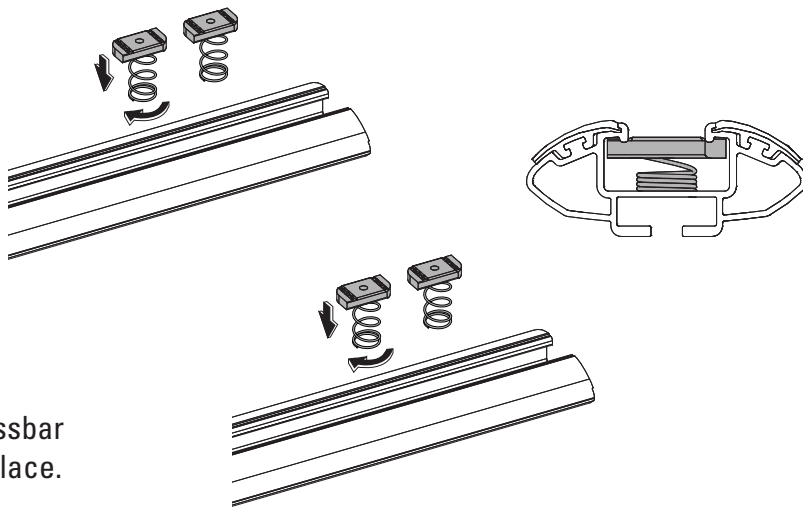


The Spring Nuts do not need to be rotated into place.

## INSERT SPRING NUTS - LOCKN'LOAD BAR

Insert 4x M8 Spring Nuts into crossbar channels as shown.

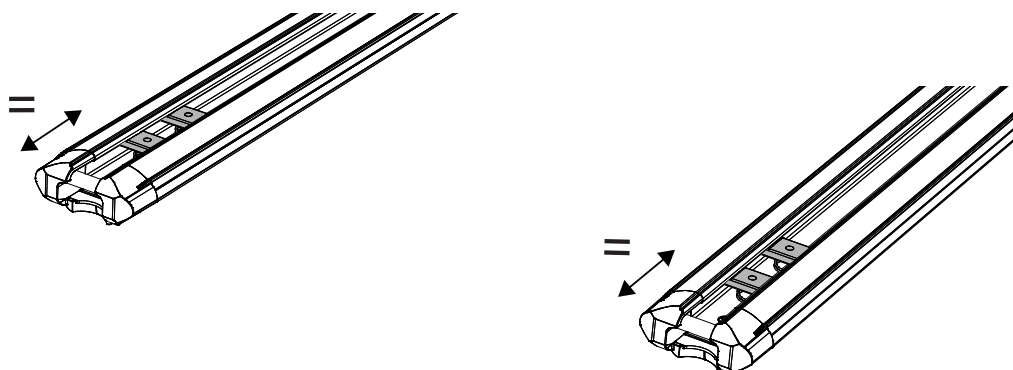
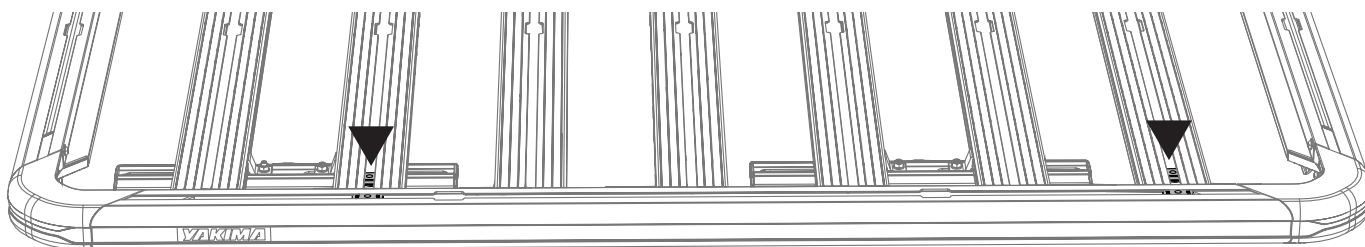
Push Spring Nuts down into crossbar channels and twist to lock into place.



**2**

## POSITION SPRING NUTS IN CHANNELS

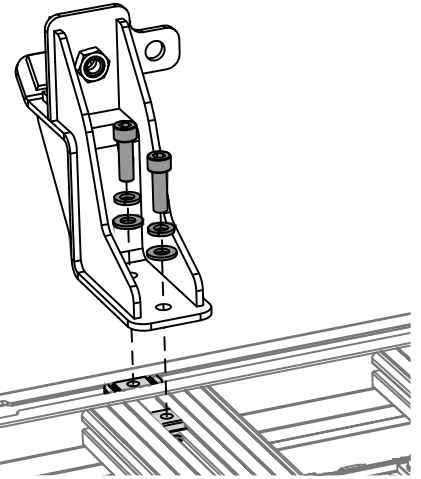
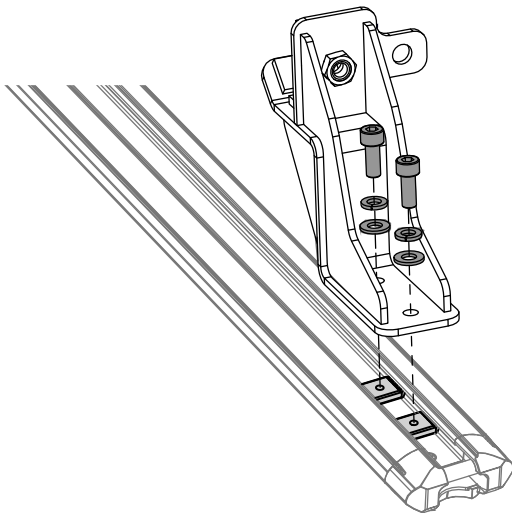
Slide Spring Nuts along channels so they are positioned as close to the Platform edge/end of crossbars as possible. The Brackets can be used as a guide for spacing. Ensure nuts are equally spaced as shown. The Allen Key can be used to assist nut movement within channel.



**3****SECURE BRACKETS - PLATFORM**

Secure both Brackets onto the Platform via the Spring Nuts using 2 x M8 Socket Head Capscrews 25mm, 2 x M8 Spring Washers and 2 x M8 Washers per bracket as shown.

Tighten all Capscrews with supplied Allen Key to 4-5N/m

**SECURE BRACKETS - LOCKN'LOAD BAR**

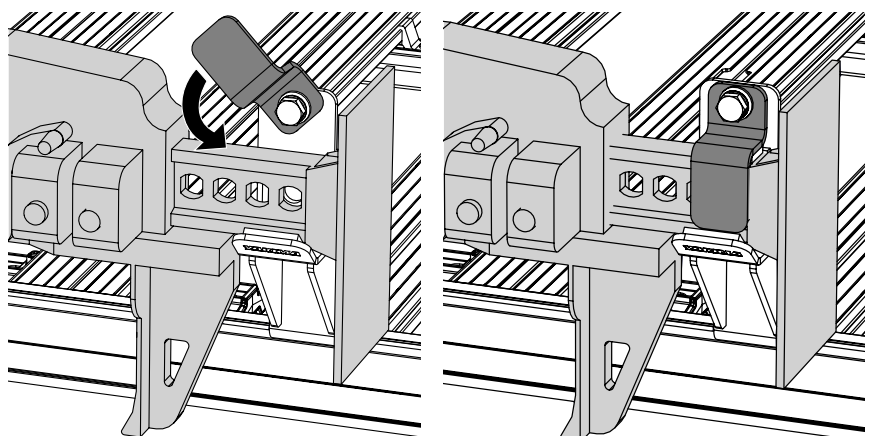
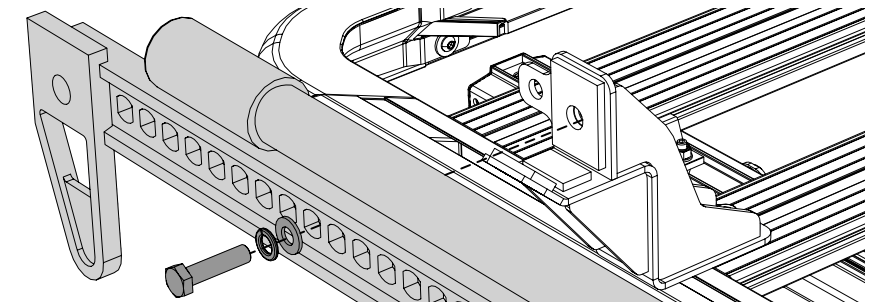
Secure both Brackets onto the Platform via the Spring Nuts using 2 x M8 Socket Head Capscrews 20mm, 2 x M8 Spring Washers and 2 x M8 Washers per bracket as shown.

Tighten all Capscrews with supplied Allen Key to 4-5N/m

**4****SECURE HIGH LIFT JACK**

Secure your high lift jack onto the Padlock Bracket using the M10 x 40mm Hex Screw, M10 Spring Washer and M10 Washer as shown.

With the high lift jack securely in place, swing the clamp down over the jack arm and tighten the M10 x 30mm Hex Screw.



The jack can be secured with a padlock (not supplied) as shown for added security.

