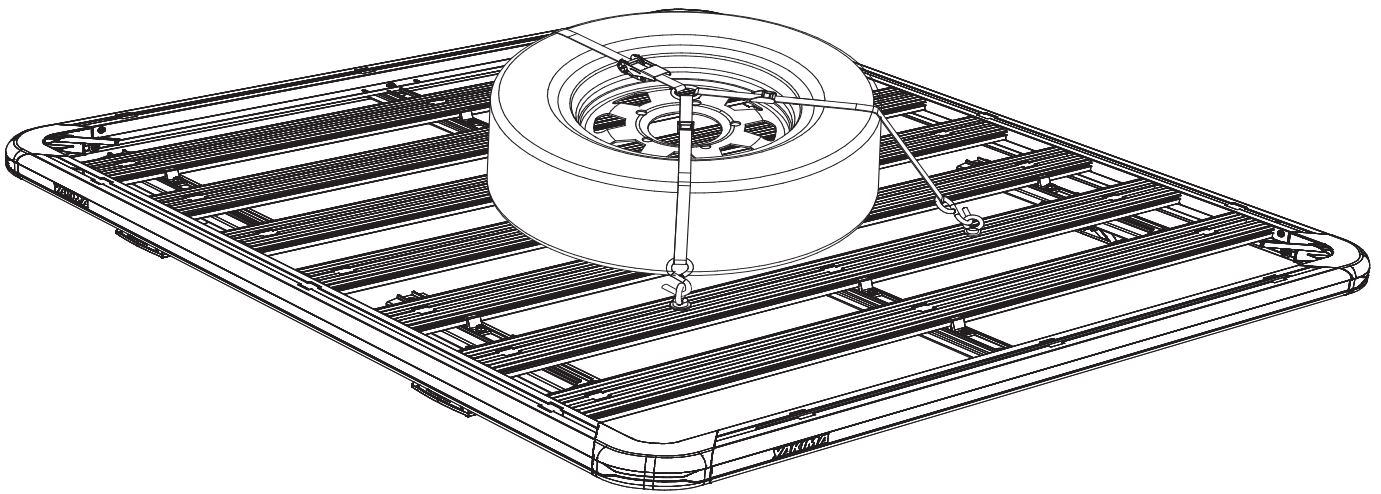


FIRST TIME INSTALLATION

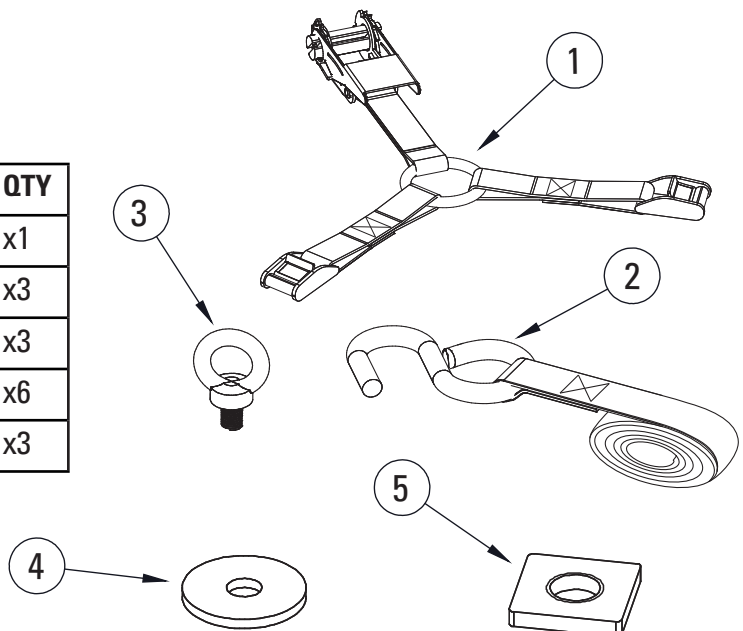
- Please read instructions carefully before installation.
- Check the contents of kit. Contact your YAKIMA dealer if any parts appear missing or damaged.
- Clean your platform prior to fitting the YAKIMA Spare Wheel Restraint.
- Place these instructions in the vehicle's glove box after installation is complete.



PLATFORM SOLD SEPARATELY

KIT CONTENTS

ITEM	COMPONENT	QTY
1.	Strap 3 Way Assembly	x1
2.	Hook & Strap Assembly 1.3m	x3
3.	M10 Eye Bolt	x3
4.	M10 Washer	x6
5.	M10 T-Nut	x3



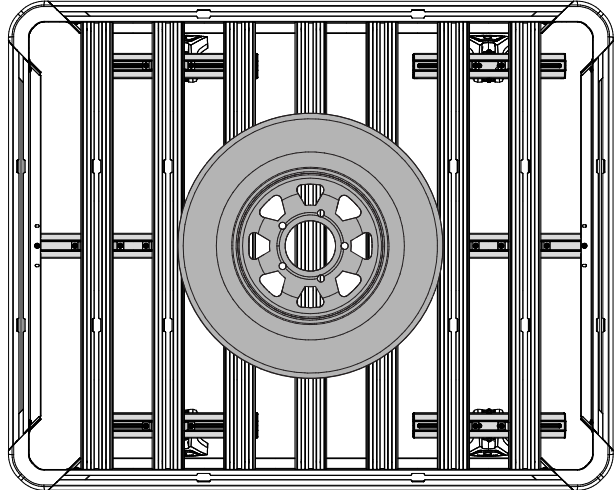
INSTALLATION

1

LOAD TYRE

Load the spare wheel onto the Platform. Centre the spare wheel as best possible on the Platform for optimal load distribution.

NOTE - Top view shown - indicative of Platform sizes A & B.

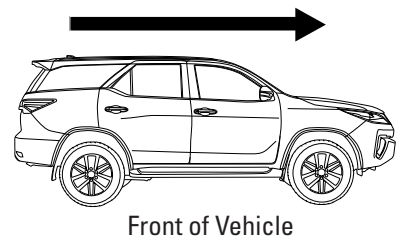
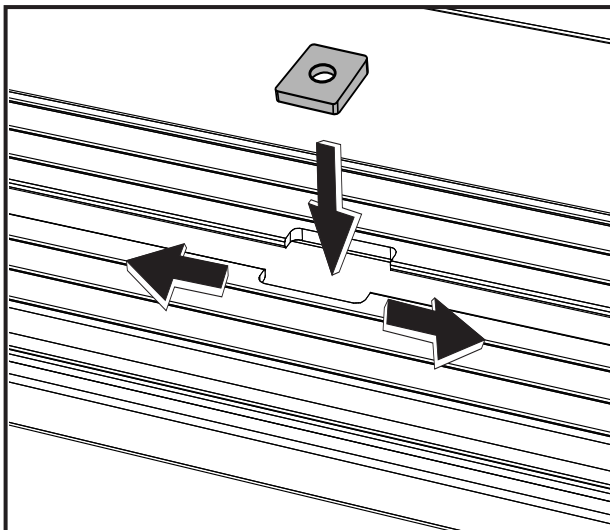
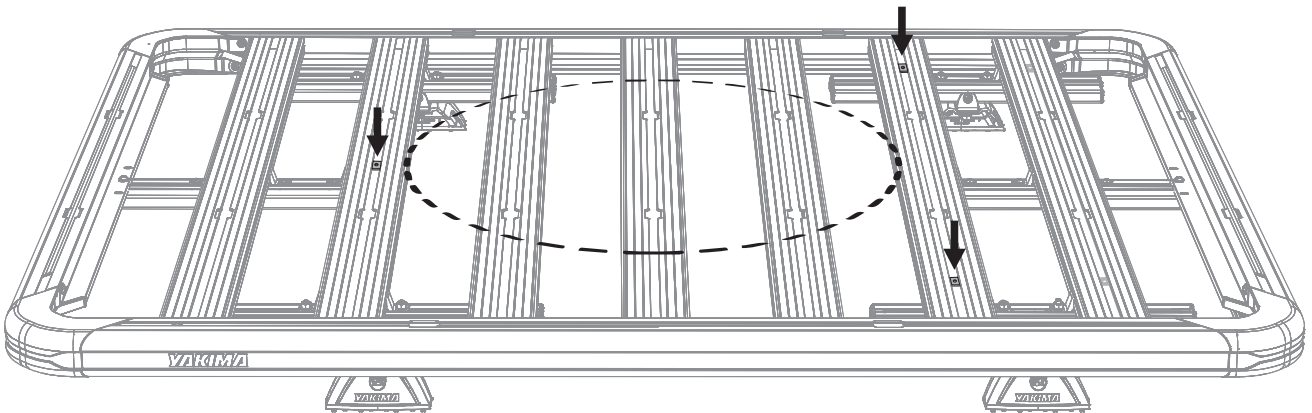


2

POSITION T-NUTS IN SLATS

Position two T-nuts into the slat in front the spare wheel, and one T-nut into the slat behind.

Insert T-nuts into the cut outs in slats and slide T-nuts along slat channels. An Allen key can be used to assist nut movement within the channels.

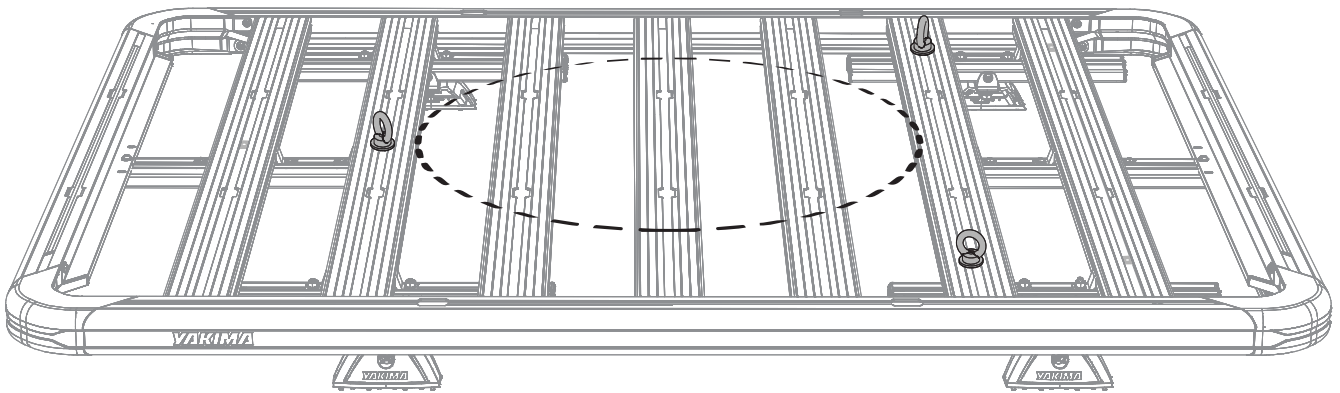
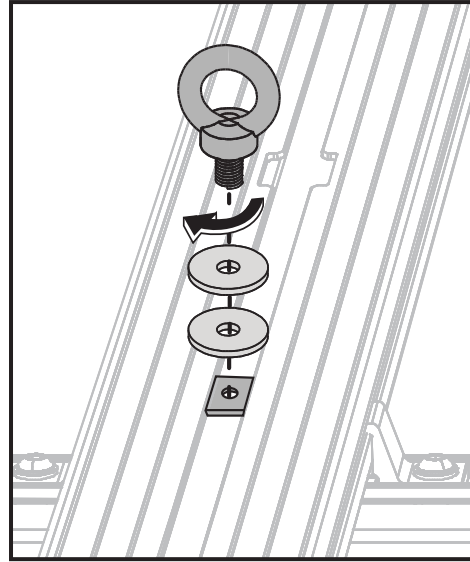


3**SECURE EYE BOLTS**

Fasten an M10 eye bolt and 2 x M10 washers onto each M10 T-nut.

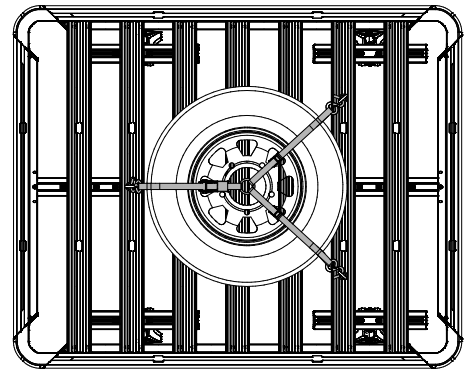
Tighten eye bolt.

A tool such as a screwdriver through the eye of the bolt may be used for leverage to tighten the eye bolt firmly.

**x3****4****SECURE STRAPS**

Hook straps onto the eye bolts and fasten the free ends to the cam buckles and ratchet.

Ensure the ring is in the centre of the wheel.
Tighten via ratchet.



NOTE - Top view shown.

